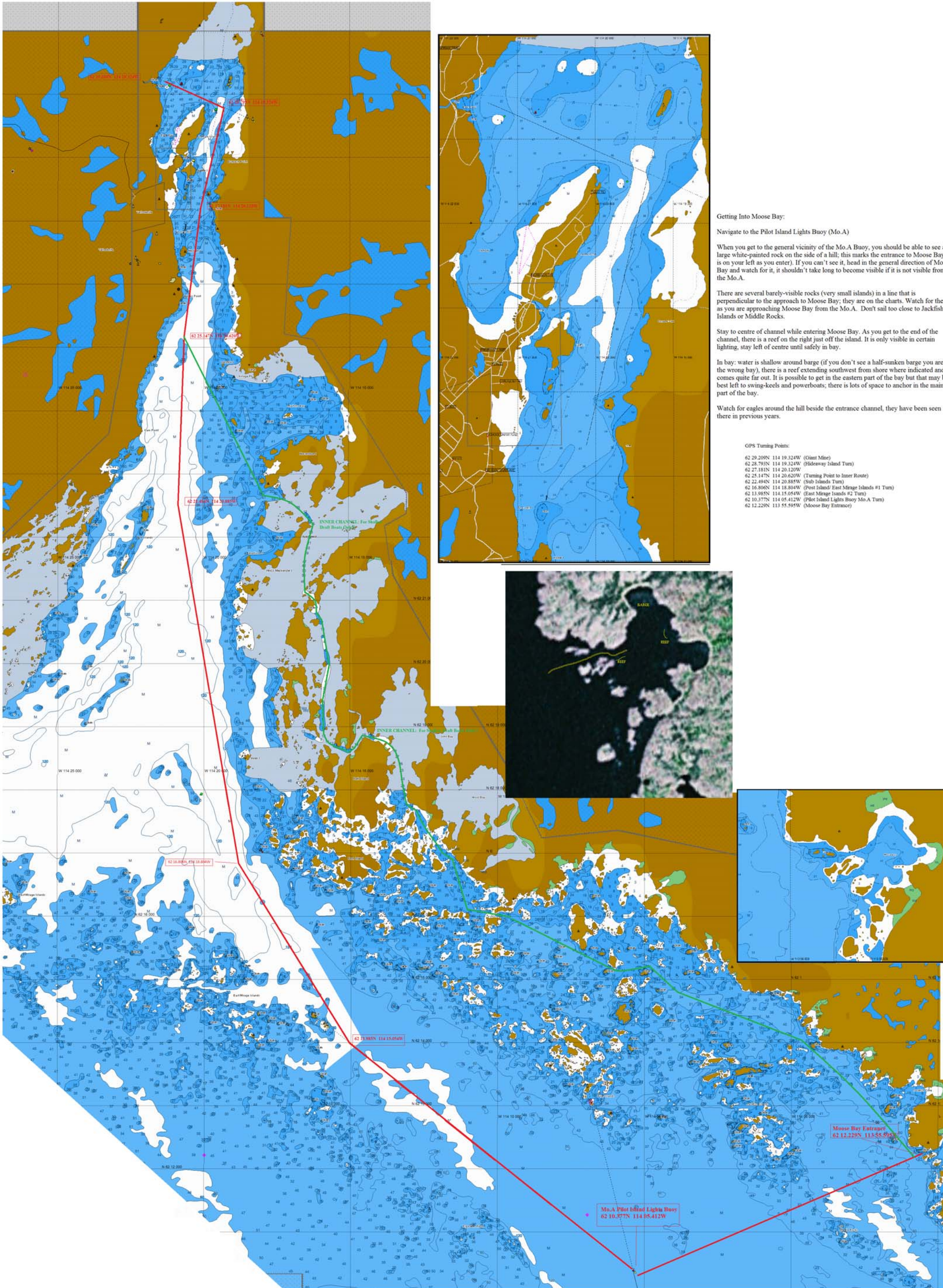


SAILING DIRECTIONS: YELLOWKNIFE to MOOSE BAY



Getting Into Moose Bay:

Navigate to the Pilot Island Lights Buoy (Mo.A)

When you get to the general vicinity of the Mo.A Buoy, you should be able to see a large white-painted rock on the side of a hill, this marks the entrance to Moose Bay (it is on your left as you enter). If you can't see it, head in the general direction of Moose Bay and watch for it, it shouldn't take long to become visible if it is not visible from the Mo.A.

There are several barely-visible rocks (very small islands) in a line that is perpendicular to the approach to Moose Bay; they are on the charts. Watch for them as you are approaching Moose Bay from the Mo.A. Don't sail too close to Jackfish Islands or Middle Rocks.

Stay to centre of channel while entering Moose Bay. As you get to the end of the channel, there is a reef on the right just off the island. It is only visible in certain lighting, stay left of centre until safely in bay.

In bay: water is shallow around barge (if you don't see a half-sunken barge you are in the wrong bay), there is a reef extending southwest from shore where indicated and comes quite far out. It is possible to get in the eastern part of the bay but that may be best left to swing-keels and powerboats; there is lots of space to anchor in the main part of the bay.

Watch for eagles around the hill beside the entrance channel, they have been seen there in previous years.

GPS Turning Points:

- 62 29.209N 114 19.324W (Giant Mine)
- 62 28.793N 114 19.324W (Hideaway Island Turn)
- 62 27.181N 114 20.120W
- 62 25.147N 114 20.620W (Turning Point to Inner Route)
- 62 22.494N 114 20.885W (Sub Islands Turn)
- 62 16.806N 114 18.804W (Post Island/ East Mirage Islands #1 Turn)
- 62 13.985N 114 15.054W (East Mirage Islands #2 Turn)
- 62 10.577N 114 05.412W (Pilot Island Lights Buoy Mo.A Turn)
- 62 12.229N 113 55.595W (Moose Bay Entrance)



Mo.A Pilot Island Lights Buoy
62 10.377N 114 05.412W

Moose Bay Entrance
62 12.229N 113 55.595W

Moose Bay

Cross safely from the NW to the SE shore by starting with the isolated round stand of trees on your stern and moving to the point opposite, avoiding the hidden reef at N 62°12.208' W 113°56.646'.

